

### Clockware -- the leading web-based time and work tracking application, enables rapid ROI for project tracking, time tracking and work tracking.

Clockware provides web-based time and work tracking Software and Online ASP Services. Time tracking, project tracking, leave tracking and work tracking anywhere any time. The recognized leader for ease of use allows the highest return on investment (ROI). Clockware is J2EE-compliant and supports major databases, Windows NT/2000/XP, Linux, Netware, Solaris, HP-UX, and AIX. Clockware – the first name in web-based time and work tracking.

*"Our major goal was to find a time reporting system that was easy to install and easy to manage. Volvo IT North America has several locations in the US with more 2,500 people. Clockware was easily deployed throughout the organization. Our people can easily record time and work, whether they are in the office, on-the-road or telecommuting."*

John Lindberg, Software Systems Engineer  
Volvo Corporation of North America

## Product Features

### Track Time and Projects

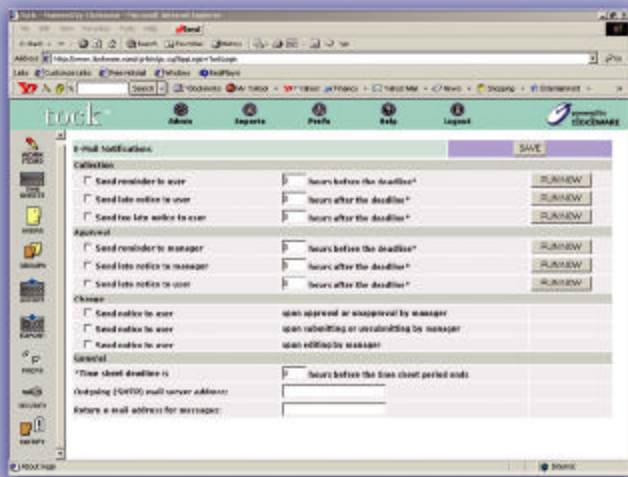
- By Customer
- By Location
- By Department
- Billable vs. non-billable
- Expense items
- Detailed comment fields
- Capitalized vs. non-capitalized
- Labor tracking attributes
- Leave and exception time
- International date, number, time support
- Multicurrency
- Billable vs. non-billable
- Adjustments
- Comp/Flex Time
- 100% Web-based
- J2EE compliant
- Multiple Approvals
- Online Help

### Management Reporting

- Customer summaries
- Project summaries
- Group summaries
- User summaries
- Utilization
- Productivity
- Balance tracking
- Flexible and configurable
- At a glance reports for users
- Schedule deviation
- User allocation
- Timesheet status
- User balances
- Accrual reports

### Benefits

- **Ease of Use** ensures simple system administration and minimal training requirements.
- **Line Managers** can use extensive workflow features to ensure that timesheets are submitted, approved and processed on time.
- **Human Resources** tracking and monitoring all leave categories with an unlimited number of balances.
- **Finance and Payroll** can integrate data for fast and accurate payroll and billing, avoiding re-work and eliminating double data entry.
- **Senior Management** can benefit from reporting tools that analyze major projects, clients and billing.
- **Security** can be role, group and project-based to ensure the system supports an organization's structure and policies.
- **J2EE Compliance** allows for maximum portability.
- **Productivity/Utilization Tracking** features are included in one system.



## Timebank for Payroll & Accounting

Clockware's Timebank integration module solves the problem of integrating time tracking data to more than 250 payroll and accounting systems.

- Make data collection for payroll easier
- Payroll managers can manage, preview and approve hours data
- Easy integration with any accounting system or payroll service
- Any payroll cycle supported—weekly, bi-weekly, semi-weekly or monthly
- Accruals can be easily tracked and monitored
- Overtime and other exceptions

## Easy Implementation

Clockware makes implementation easy in 30 days or less.

- FREE admin training
- FREE user training
- FREE supervisor training
- Implementation guides and workbooks
- Sample configuration files
- Import user data from other directories or systems

## Other Features

- Flexible role-based security to create custom roles
- Simple Graphical User Interface
- Customize time sheet styles
- Flexible time sheet rules
- Email Notifications to improve data collection and approval process
- Approval dashboards
- Project management approval workflow
- Summary level approval
- Powerful group hierarchies
- Project hierarchies
- Flexible task-based and user-based billing rates
- Import/Export utilities
- MS Project interface
- Technical services for reporting and integrations

## Software System Specifications

### Operating Systems:

Windows NT 4.0 or higher, 2000, XP  
Solaris 7 & 8, Linux, NetWare 6.5, HP-UX, AIX

### Database:

Oracle 8i & 9i, MS SQL Server 2000, MYSQL

### Application Server/Web Server:

Novell exteNd Application Server  
Tomcat, Websphere

### Client:

Windows 98/2000/NT/XP

### Browser:

IE 5.0 or higher,  
Netscape 4.7 or higher